



APPLEWOOD POINTE
NEW BRIGHTON

Braeburn

2 Bedrooms / 2 Bathrooms
Unit #315
1,334 square feet

This home is finished with the following distinct features:

- Amazing lake views
- Electric fireplace
- Fabric Roman shades in living room
- Upgraded lighting including fans in living room and bedrooms
- Appliance garage
- Elevated bathroom vanities
- Berber carpet throughout
- New fridge with bottom freezer, dishwasher, microwave, and stack washer/dryer with utility sink.

Additional information:

- Buyer can participate in the Appliance Replacement Program to receive 50% of the standard cost for the range only
- DirecTV, internet, landline phone service included

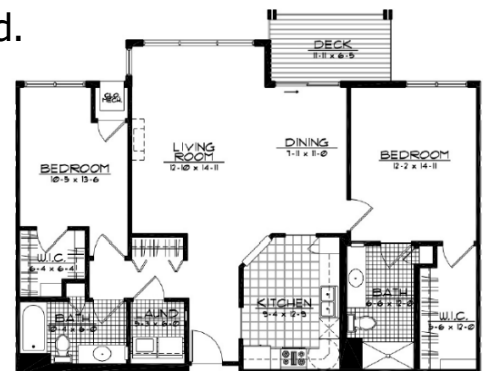
Transfer Value as of 8/29/25: \$ 311,514 (includes upgrades)

The Share Value is subject to change based on the closing date, and will be updated, due to appreciation, when the closing date is confirmed.

Monthly fee: \$2,339

Option B

Assigned garage stall #51



If you are interested in this home, please contact the Applewood Pointe Office at 651-636-1137

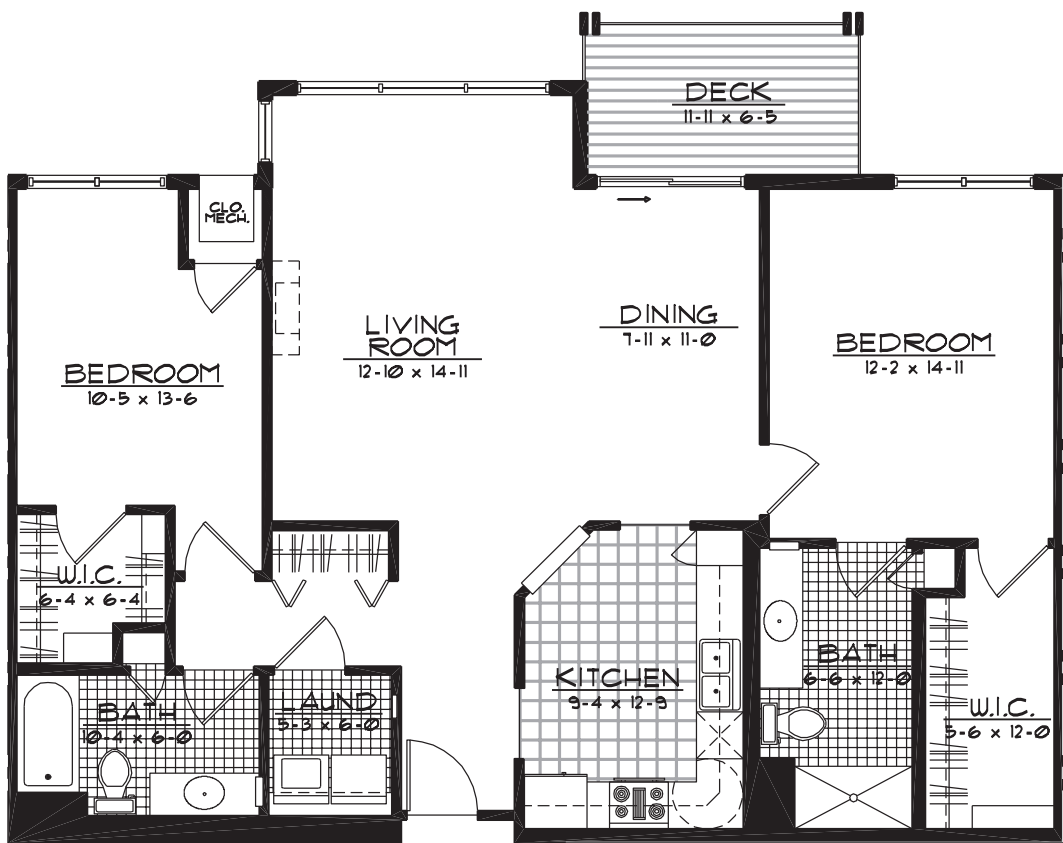
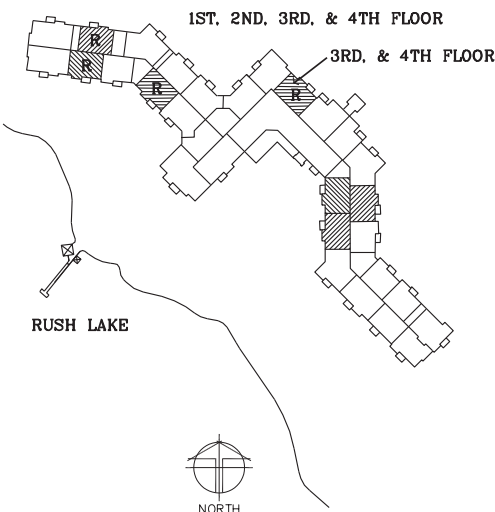
BRAEBURN 2BR

1,334 SQ. FT.



APPLEWOOD POINTE
NEW BRIGHTON

Actual dimensions may vary due to construction.
Plans are subject to change without notice.





APPLEWOOD POINTE
NEW BRIGHTON

#315



Kitchen



Living room/ Dining Room



Bedroom



Bathroom



Laundry Room with utility tub



Deck View overlooking Rush Lake